

DRAFT: February 1, 2017

# Trails Planning and Design

## *Implementing the 2016 Eugene Trails Plan*

Spring 2017 • Mon/Wed/Fri from 1:00 – 5:00 pm • Location TBA

Instructor: Jeff Krueger, RLA • JK Environments LLC • [jkruege2@uoregon.edu](mailto:jkruege2@uoregon.edu) • [www.jkenvironments.com](http://www.jkenvironments.com)

Class folder: TBA

Software: Experience with Adobe Illustrator and PhotoShop recommended, but not required. We will be using Illustrator to create maps and site plans and PhotoShop for Photo Imaging, but hand drawn maps and illustrations or other design software may be substituted if desired.

### Background

Trails are about getting outside and recharging; about connecting to nature and connecting with friends and family; about getting to places we want to be, but also about appreciating the journey. Trails have been popular in Eugene for a very long time and have contributed greatly to our community's identity and livability. Eugene's existing soft-surface recreational trail system currently covers approximately 40 miles. This includes 24 miles of designated pedestrian trail, 7 miles of shared-use trail (bicycles and pedestrians), and 9 miles of designated running trail. With continued population growth and increased interest in walking, running, and biking, Eugene's recreational trail system is at times stretched to its limits.

In 2016, the City of Eugene completed its first ever system-wide trails planning effort. The [Eugene Trails Plan](#) (ETP) paints a picture of a significantly expanded trail network that better accommodates a range of trail users (hikers, runners, mountain bikers, paddlers, and possibly equestrians). A total of 67 separate trail related projects are proposed in the plan including construction of new trail segments, feasibility and compatibility studies, and projects requiring acquisition of land or easements. With implementation of the ETP over the next twenty years, **Eugene's trail network is expected to more than double to over 100 miles** of soft-surfaced recreational trail and include access to several new or improved water trail segments.

The ETP proposes a number of general trail corridors that are still highly conceptual (point A to point B) and developing siting and design options for these specific corridors will be the focus of this studio. We will work



*Trail construction near the summit of Spencer Butte (2015)*

closely with City staff on developing alternatives and our recommendations will be used by the City to plan for future park land acquisition and trail construction activities. The City will look to us to be visionary and creative. A number of field trips to explore and critique the local trail system and guest lectures will be provided by trail advocacy groups such as the Obsidians and Disciples of Dirt along with City of Eugene Parks and Open Space staff.

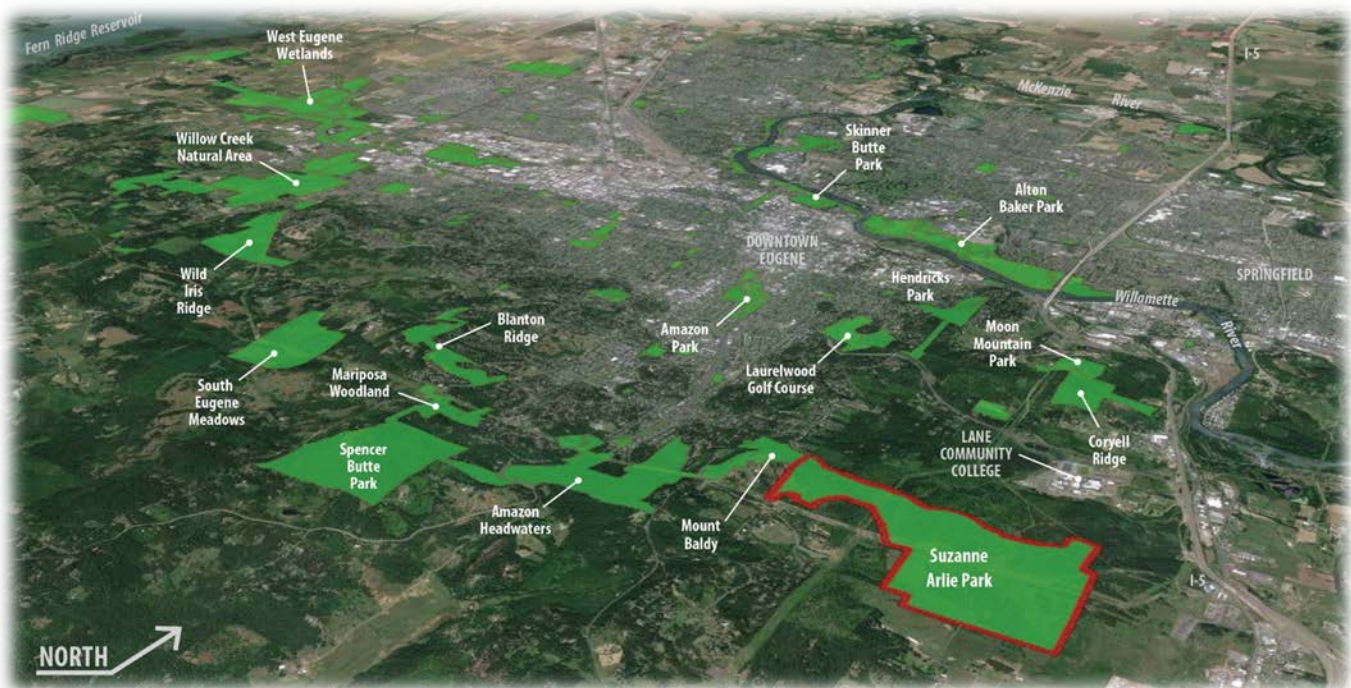
### Overview of Studio Assignment

Students will begin the studio by learning basic trail planning and design concepts, studying and critiquing Eugene’s current trail network through a series of class field trips, and reflecting on their own trail experiences. We will work at a variety of scales to gain an

understanding of the constraints and opportunities presented by our local landscape and land use patterns. Students will then select an individual trail corridor to focus on for the remainder of the studio. Initial assignments will include site analysis of individual study areas, development of trail siting and design criteria, and development of several trail alignment alternatives which will be presented at midterm for feedback. During the second half of the term, students will refine their potential corridors and then develop and apply an assessment methodology. Based on the results of the assessment, a single trail proposal will be selected and refined. Final work will include a detailed proposal for trail alignment, trail amenities, access to points of interest, local access points, parking, integration of signage and art, and land acquisition needs. We will use diagrams, photo imaging, sketches, etc. to make our proposed trails come to life and represent what a future trail user might experience as they move along your trail.



*The Dillard Connector Trail is the newest addition to the Ridgeline Trail system.*



*Connect the Dots (the Ridgeline Area will be one of several trail planning areas)*

## Instructor

Jeff Krueger is a registered landscape architect in the state of Oregon and has over twenty five years of experience providing planning, design, and project coordination for local governments and non-profit organizations in the Willamette Valley. He opened his own firm, Jeff Krueger Environments LLC in 2013. He has previously worked for Lane Council of Governments, the U.S. National Park Service, and two private landscape design firms. Jeff has extensive planning and design experience in the areas of natural resources, parks and open space, recreational trails, land use, and bicycle and pedestrian facilities. Jeff holds a degree in Environmental Design from the University of Massachusetts (1987) and a BLA and MLA from the University of Oregon (1991/92).

## Learning Outcomes

Participants in this course will develop an appreciation and understanding for urban trails; develop trail planning and design skills at a range of scales; learn to site/design trails that provide an outstanding user experience; gain a basic understanding of the local ecology; and understand how the local environment can be protected through sustainable design methods.

By the end of the course, students will be able to:

- Site and design a soft-surface recreational trail network.
- Develop technical details for proposed trails and related facilities.
- Write trail planning and design criteria.
- Conduct detailed site analysis for guiding trail siting decisions.
- Develop and implement a trail siting assessment methodology.
- Use guidance from and from local, State, and Federal trails plans.
- Understand how to maximize trail user experience.
- Utilize Adobe Illustrator to create thematic maps and trail concept plans.

## Guidelines for Studio Participation

- Scheduled Class Time:  
Students must be present during the regularly scheduled studio time. If a student is not able to attend they should notify the instructor in advance to request and excused absence. We will have a regular class meeting at 1:00 every day and a class check-in at about 4:30 on most days.
- Individual Site Visits:  
Students are encouraged to visit potential trail corridors in their study areas. However, at least some of the land you are planning for will be located on private property, so please respect property rights and do not venture into these areas by foot. Using off-site methods



*Ridgeline Trail*

such as aerial photo interpretation (google maps) and available data are recommended for evaluating those non-public lands.

- Consolidating Questions and Requests: Questions or requests for data from City or other staff should be coordinated through the instructor.
- Grading Standards: This course is graded on a pass/no pass basis. To pass the course, students must attend class on a regular basis, participate in group discussions, and adequately complete all assignments. Preliminary assignments are given at the beginning of the term, but the instructor may be modifying these on the fly and will be adding additional assignments following the midterm review. All final work must be submitted to the instructor in electronic format (PDF) before a grade will be submitted.



*Could an Amazon Creek Water Trail be a reality?*

### **Academic Misconduct Policy**

The [University Student Conduct Code](#) defines academic misconduct. Students are prohibited from committing or attempting to commit any act that constitutes academic misconduct. By way of example, students should not give or receive (or attempt to give or receive) unauthorized help on assignments or examinations without express permission from the instructor. Students should properly acknowledge and document all sources of information (e.g. quotations, paraphrases, ideas) and use only the sources and resources authorized by the instructor. If there is any question about whether an act constitutes academic misconduct, it is the students' obligation to clarify the question with the instructor before committing or attempting to commit the act.

### **Accessible Education**

The University of Oregon is working to create inclusive learning environments. If there are aspects of the instruction or design of this course, which may result in barriers to your participation, please notify the instructor as soon as possible so that accommodations can be made. We are happy to modify the course requirements as needed to allow individuals with any limitations such as sight and mobility to participate and your perspective could provide a valuable learning opportunity for the entire class. You may also wish to contact the [Accessible Education Center](#) for more information about the University of Oregon policies.

### **Inclusion Statement**

The School of Architecture and Allied Arts is a community that values inclusion. We are committed to equal opportunities for all faculty, staff and students to develop individually, professionally, and academically regardless of ethnicity, heritage, gender, sexual orientation, ability, socio-economic standing, cultural beliefs and traditions. We are dedicated to an environment that is inclusive and fosters awareness, understanding, and respect for diversity. If you feel excluded or threatened, please contact your instructor, department head, or the [University Bias Response Team](#).