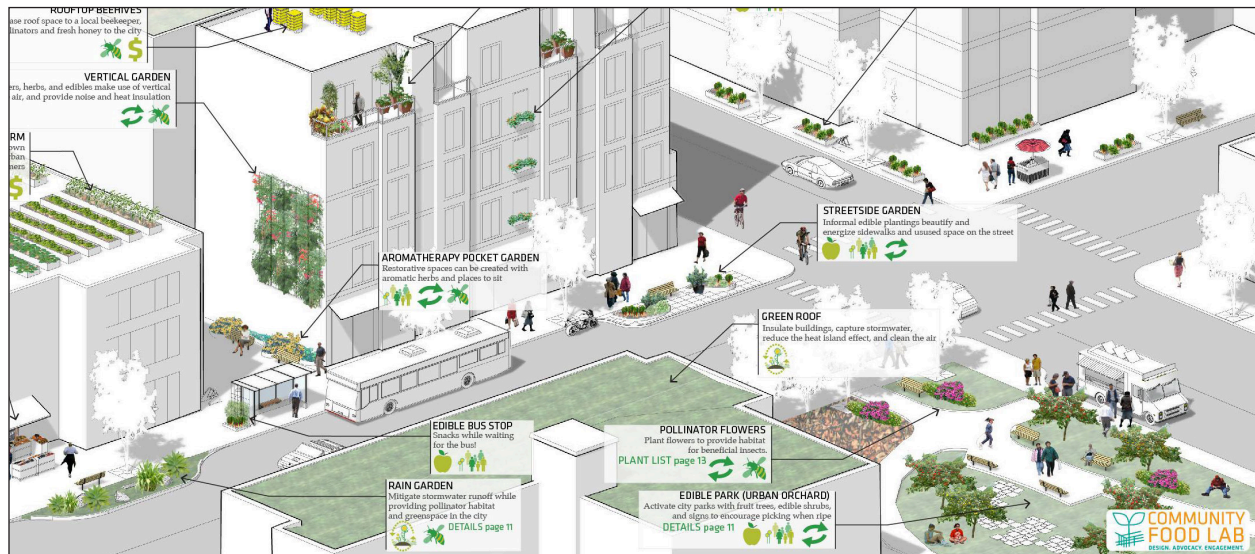


THE EDIBLE CITY: Skinner City Farm & new productive landscapes

LA 539 WINTER 2019



Community Food Lab

Instructor	Time	Location	Credits	CRN
Jacques Abelman Lawrence Hall, Room 211 jabelman@uoregon.edu	M, W, F 1:00pm - 4:50pm	LA 310	6	24088

Studio Description

Can Eugene become a food utopia? What is the potential for intensive urban agricultural production within the urban growth boundary of Eugene? What kinds of new spaces could be generated in the city through agrarian urbanism?

In this studio we will investigate the potential of productive landscape typologies to create new spatial experiences in the existing fabric of the city. Our site is Skinner City Farm, a site slated for new projects by the City of Eugene Parks and Open Space Department. Other partners of the studio include Mountain Rose Herbs, Ninkasi Berwery, and Wildcraft Cider. Each of these companies is interested in potential partnerships and a stake in new urban spatial designs which reflect the mission of their businesses. The studio will engage these innovative public-private partnerships to envision new urban green typologies that are productive in terms of food but also socially, ecologically, and economically.

This second Edible City Studio is being offered in coordination with the Urban Farm (<https://blogs.uoregon.edu/urbanfarm>) and the Food Studies Program (<https://foodstudies.uoregon.edu>), the City of Eugene as well as local businesses partners. The project will benefit from guest visits from faculty and professionals. The studio will introduce and an ethnographical design approach. Fieldwork, uncovering and creating spatial narratives will be the working ground of this studio. We will also methodically explore productive landscape typologies and apply them to urban scale landscape architectural interventions.

THIS COURSE IS OFFERED IN CONJUNCTION WITH THE LA 410/510 FOOD SYSTEMS SEMINAR. Please register for both if possible.



MUFI: Michigan Urban Farming Initiative Garden

Context

Oregon is the 12th hungriest state in the nation and the hungriest in the Northwest. Nearly one in seven households in Oregon were “food insecure” between 2014-2016. One recent study found that 59 percent of college students at one Oregon university were “food insecure” at some point during the previous year, with possible implications for academic success, physical and emotional health and other issues.

Prerequisite

This studio is for Landscape Architecture MLA students only or by permission of instructor.

Curricular Context

This class is required for first-year MLA (First Professional MLA) students.

Class Format

Class meeting times are primarily structured around design critiques, class discussion, lectures, project work, site visits, and occasional guest presentations. Outside of class time, students are expected to analytically review selected readings, research similar project typologies both past and present, execute site visits, develop designs for intermediate assignments, and prepare for midterm and final reviews.

Grading

Consistent with all Department of Landscape Architecture studios, this studio is graded Pass/No Pass with formative and summative feedback.