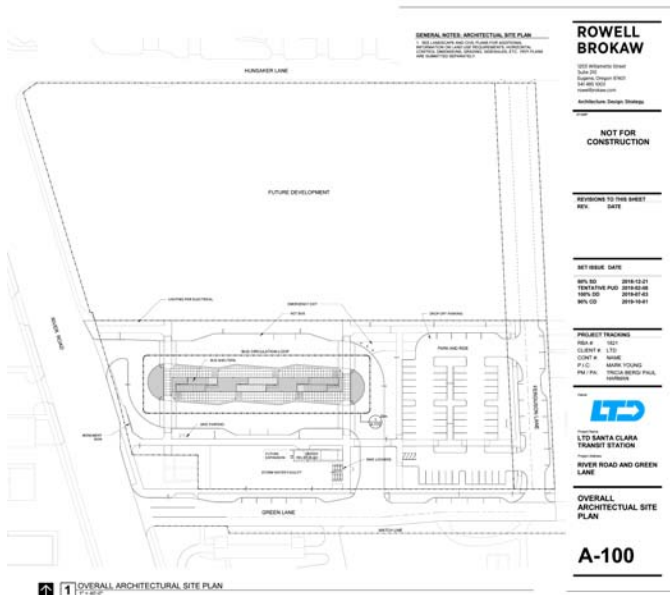


RIVER ROAD EMX BUS RAPID TRANSIT TERMINAL STATION PUBLIC PLAZA WITH MIXED-USE STATION AREA CORE

UO Landscape Architecture 439, Winter 2020 with Rob Ribe



Lane Transit District (LTD) is planning a new EMX bus line out to northwest Eugene. This follows their implementation of EMX lines between Eugene and Springfield downtowns, around Springfield, and out West 11th Avenue. LTD has acquired a station site at the end-point of the new River Road EMX, and has adopted a design for this station (above) that uses less than half of the property. They, together with the city, hope to make this new station become the core of a greater station area where more people will live and shop and ride the EMX.

This studio will develop alternative designs for the private or private/public development of the unused part of LTD's station property. We will inform the formulation of a request for proposal (RFP) written by the City of Eugene to recruit a developer for the site. Our designs will incorporate a public plaza as the heart of the place well connected with the station. Our plaza proposals will be aim to create a great iconic place that validates the River Road Neighborhood and attracts people to come and hang out and enjoy events and truly urban social life. It will facilitate diverse transit connections from the neighborhood to the EMX.

The city and River Road Neighborhood expect our plaza proposals to include mixed-use buildings that will offer retail services to commuters and visitors and contribute to the moderate densification of residential and commercial land uses along the River Road corridor. They would also like the mixed-use buildings to include housing for lower income residents.

This is a UO Sustainable City Year Program sponsored studio class supported by LTD.