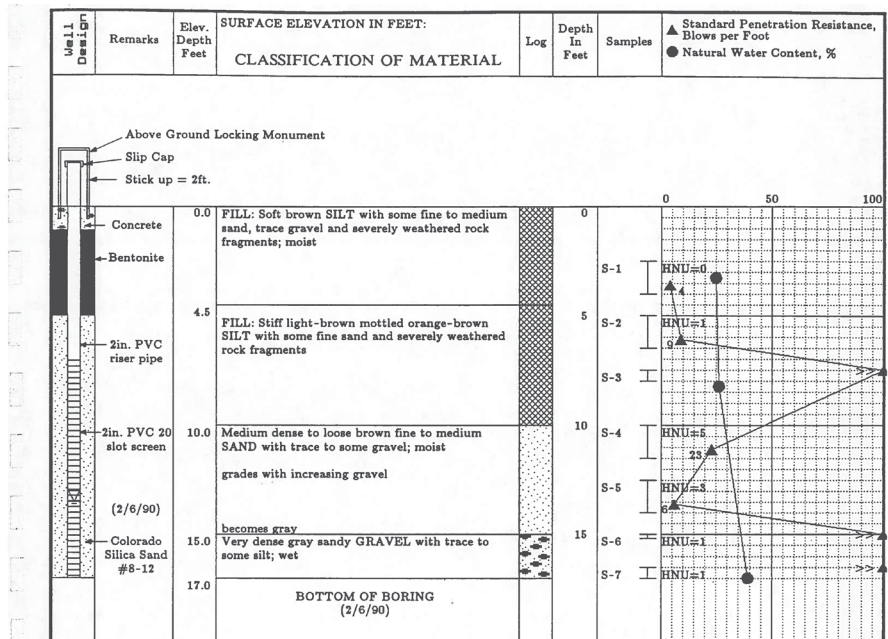


LA 439/610 Landform Reclaiming the Campus Riverfront

Environmental Site Assessment
Parcel North of the Railroad Tracks
Riverfront Research Park
University of Oregon
July 1990
L.R. Squier Associates



Time MWF | 1:00pm - 4:50pm

Office Hours Wednesday 9:00 - 11:00
calendly.com/mgeffel

Location TBD

Credits 6

Instructor Michael Geffel
Landscape Architecture
mgeffel@uoregon.edu

Jean Yang
Landscape Architecture
jeany@uoregon.edu

Studio Description Formerly a gravel quarry and landfill, the “Parcel North of the Railroad Tracks” has remained back of house to the University of Oregon despite its lengthy river frontage. Development of the property has been contentious over the last half century, but the recent conditional use permit has established a vision for the riverfront which prioritizes ecological regeneration, research and education. In particular, there is an aspiration to regrade the site to improve habitat value and public access along the Willamette River, no small task given that the shoreline is constructed from concrete rubble.

For the 2021 Landform Studio, students will use the fundamental medium of earth to develop schematic designs for the UO Campus Riverfront, staging new conditions for research, public use, and ecological function. Both sections will be taught in parallel.

LA 439/610 Landform Reclaiming the Campus Riverfront

Schedule	Monday	Wednesday	Friday
Week 1 3D Sequencing	January 3 Studio Intro <i>Context</i>	January 5 Design Process, phase 1 <i>3D Sequencing</i>	January 7 Site Visit
Week 2 3D Sequencing	January 10 Design Technique <i>Cutting the section</i>	January 12 Representation <i>Below Grade</i>	January 14 <i>Phase 1 Pin Up</i>
Week 3 Anamnesis	January 17 MLK Jr Day NO CLASS	January 19 Design Process, phase 2 <i>Anamnesis</i>	January 21 Site Visit OR Pin Up
Week 4 Anamnesis	January 24 Design Technique <i>Designing in Section</i>	January 26 Design Technique <i>Translating to Plan</i>	January 28 Site Visit OR Pin Up
Week 5 Preparation	January 31 <i>Phase 2 Pin Up</i>	February 2 Design Process, phase 3 <i>Preparation</i> <i>clay models</i>	February 4 Working Session
Week 6 Preparation	February 7 Design Technique <i>Breaklines, part 1</i> <i>Study Models Due</i>	February 9 Design Technique <i>Breaklines, part 2</i>	February 11 <i>Phase 3 Progress Pin Up</i>
Week 7 Relational Structuring	February 14 Representation <i>Grading concept</i>	February 16 Working Session	February 18 <i>MID-REVIEW</i>
Week 8 Relational Structuring	February 21 Design Process, phase 4 <i>Relational Structuring</i>	February 23 Design Technique <i>Tying into Grade</i>	February 25 Shadow Mentor Day NO CLASS
Week 9 Representation	February 28 Working Session	March 2 Working Session	March 4 <i>Phase 4 Pin Up</i>
Week 10	<i>Final Review (TBD)</i>		
Week 11	Exit interviews		

Syllabus
Winter 2022

LA 439/610 Landform Reclaiming the Campus Riverfront

Readings

Week 1
Reclaiming Sites

Marot, Sebastien. "Reclaiming of Sites" in *Corner, Recovering Landscape* (1999). 44-57

Recommended Text Books

Site Engineering for Landscape Architects, 6th Edition / Strom, Nathan and Woland
(L.A.R.E. Reference List Reading)

Landscape Site Grading Principles: Grading with Design in Mind, 1st Edition / Sharky
(Digital Copy in Course Folder)