

LA 4/572

## Overlook Seminar | Transpecies Design

Spring 2022

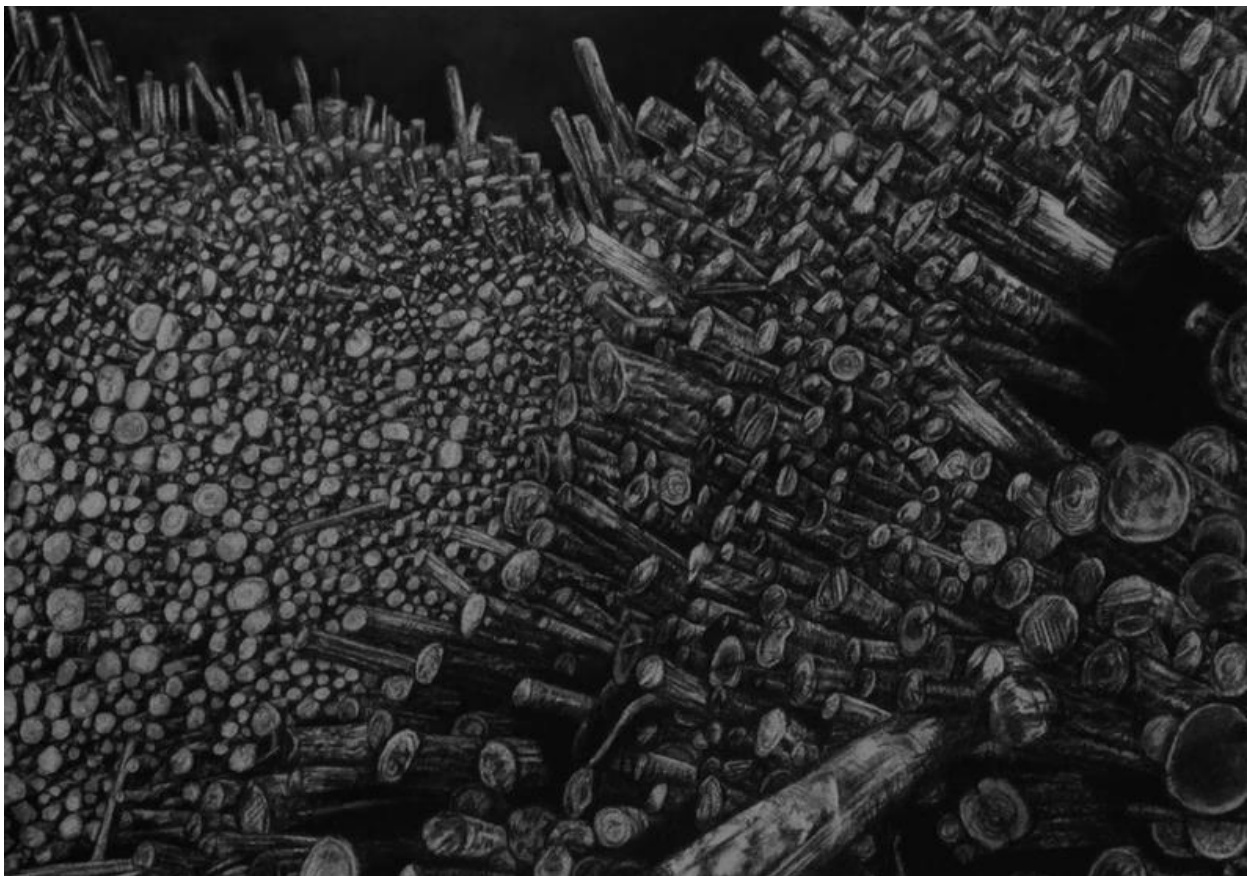
Professor Liska Chan

Department of Landscape Architecture

Office: 217 Lawrence Hall

119 Fenton Hall

Fridays 9:00 – 12:00



Nina Elder, 2016. Willamena Pulp Mill. Charcoal and incinerated industrial pulp waste on paper 22 inches x 30 inches

Seminar Theme: Transpecies Design (written by Adrian Parr)

In May 2019, the United Nations released the *Global Assessment Report on Biodiversity and Ecosystem Services* warning that human activities will drive nearly one million species to extinction in a few decades. The primary reasons for this are habitat loss and biodiversity

demise caused by changing climate, pollution, introducing nonindigenous species, clearing of land, and over population and consumption.

These findings present two gargantuan challenges for humanity: human wellbeing is interwoven with that of animals and plants, and humans must change course. One way we can accomplish the needed transformation is to move beyond an anthropocentric view and embrace a transpecies one.

Transpecies design is an other-than-anthropocentric approach to regenerating, restoring, reinvigorating, and replenishing the natural environment. Transpecies design honors biodiversity as a common heritage, one we share with other species. Rather than presenting the human experience and flourishing as the goal of design, transspecies design takes the inextricable linkages connecting animals and plants as both the point of departure and the end goal of design.

As such, transspecies design moves beyond human experience and behavior serving as the fundamental ingredient for how design decisions are made, and the direction design processes take. Such design practices engage the substantive realities of a multiplicity of species as both design content and form, harnessing the affective capacity of design to maximize deep flourishing.

### Structure and objectives

This course is intended to introduce students to theory and practices related to transpecies design. Class will meet regularly on Friday 9-12. Most days we will have a guest speaker. There will be a small number of creative assignments and at least one written project.

The University of Oregon lies on the Kalapuya Ilihi, the homeland of the Kalapuya people. This nation (along with all other tribes west of the Cascade mountains) were forceably relocated without treaty to coastal reservations so that pioneer-colonists could acquire their land through the U.S. Homestead Act. Their ancestors are now citizens of the Confederated Tribes of Grand Ronde and the Confederated Tribes of Siletz Indians, and we extend our respect to these communities.