

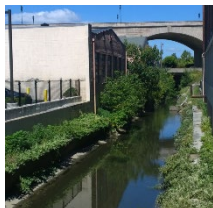
# LA 301 : Environmental Design

## Careers

CRN: 26375 Meets Monday 11:30 – 12:50. Room: 405A LA Winter  
24 Instructor: Shirtcliff Ben, Director of Environmental Design  
Office Hours: Wednesday, 11:00 am – 12:00 pm.



Landscape Media



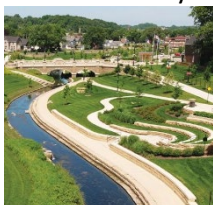
Sustainable Built  
Environments



Climate Resilience  
and Advocacy



Urban  
Sustainability



Landscape Design

### *Restricted to Environmental Design Majors*

Welcome to the College of Design's first zero-barrier, exploratory major! The course is designed to support new majors in Bachelor of Environmental Design. Careers for environmental designers are in high-demand, range widely, and are not as proscribed as careers for landscape architecture, for example. Students in the Bachelor of Environmental Design degree should choose their degree track (among 5 track options) with their career strategy in mind. By identifying professional design roles early in their studies, Bachelor of Environmental Design students can strategically choose their degree track and elective coursework in order to prepare themselves for the job market.

### Learning Outcomes

- Write a professional résumé, cover letter, and thank you e-mail.
- Demonstrate networking and interviewing skills by communicating orally in a clear and effective manner.
- Write clearly and concisely to communicate with a professional audience.
- Identify at least three strategies/next steps to gain environmental design career-related skills and knowledge.
- Identify coursework that will prepare the student for their intended career goals.

### Major concepts

- Broad understanding of professionalism and effective written and verbal communication.
- Introduction to professional development, including how to identify needed career-related knowledge, skills and abilities, and then strategizing methods to proactively acquire/strengthen these areas.

### Course Content:

- Regular lectures by experts in a wide range of environmental design fields, like landscape architecture, project management, sustainability, geotechnology, urban and community development, and more
- In-class workshops on career preparation materials
- Review of relevant courses and research opportunities offered at the University of Oregon

Contact: Ben at [bshirtcl@uoregon.edu](mailto:bshirtcl@uoregon.edu)